

Technical Specification

	DESCRIPTION	SPECIFICATION
PERFORMANCE	Printing Technology	LCD Stereo Lithography
	Build Volume	192 × 120 × 180 mm 7.5" × 4.7" × 7.1"
	XY Resolution	49.8 μm
	Maximum Accuracy*	±10 μm
	Layer Thickness (Z Resolution)	10-200 μm (50, 100 μm recommended)
	Separation Mechanism	Micro-stereo composite peeling structures
	Support	Uniz smart support technology
	Printing Speed**	6 full arches in 5 minutes
STRUCTURAL	Dimension / Weight	380 × 380 × 1230 mm [WxLxH] 15" × 15" × 49" 60 KG/132 LB
	Dimension/Weight (Including packaging)	490 × 490 × 1300 mm [WxLxH] 20" × 20" × 51" 65 KG/144 LB
	Operating Temperature	18-28° C (64-82° F)
	Power Requirement	110V/60Hz 6A 220V/50Hz 3A
	Optical System	4th Generation Collimated Light Source
	Mechanical	Cast Aluminum & CNC, Sheet Metal
	Connectivity	USB Flash Drive, Wi-Fi, Ethernet
	Control Panel	7" Touch Screen
SOFTWARE	System Requirement	Windows 10 and up (64-bit only) Mac OS X 11.4 and up (64-bit only) 16GB RAM, OpenGL 2.1, Discrete Graphics
	Advanced Features	Built-in Advanced Model Repair, Dentist and Technician Friendly, Ultra Large File Support (1GB+)
	Slice Format	ZSLR
	Compatible Format	STL, OBJ, AMF, 3MF

* The indicators are obtained with specific testing models and may vary among different ones.

** Speed achieved with 6 standard aligner models sliced at 100 microns.



WORLD'S FASTEST DENTAL 3D PRINTER

Validated Third-party Resin Partners

Validated by various resin suppliers, providing advanced certifications for Class II and III dental applications.



UNIZ TECHNOLOGY LLC

www.uniz.com 9400 Activity Rd Ste L
sales@uniz.com San Diego, CA 92126, US

製造業元: Uniz Technology (Beijing) Co., Ltd. (China) 医療機器届出番号: 13B1X10100000119



WORLD RECORD SPEED
6 full arches in 5 minutes



STATE-OF-ART ACCURACY
±50μm, up to 95.05%
±100μm, up to 99.6%



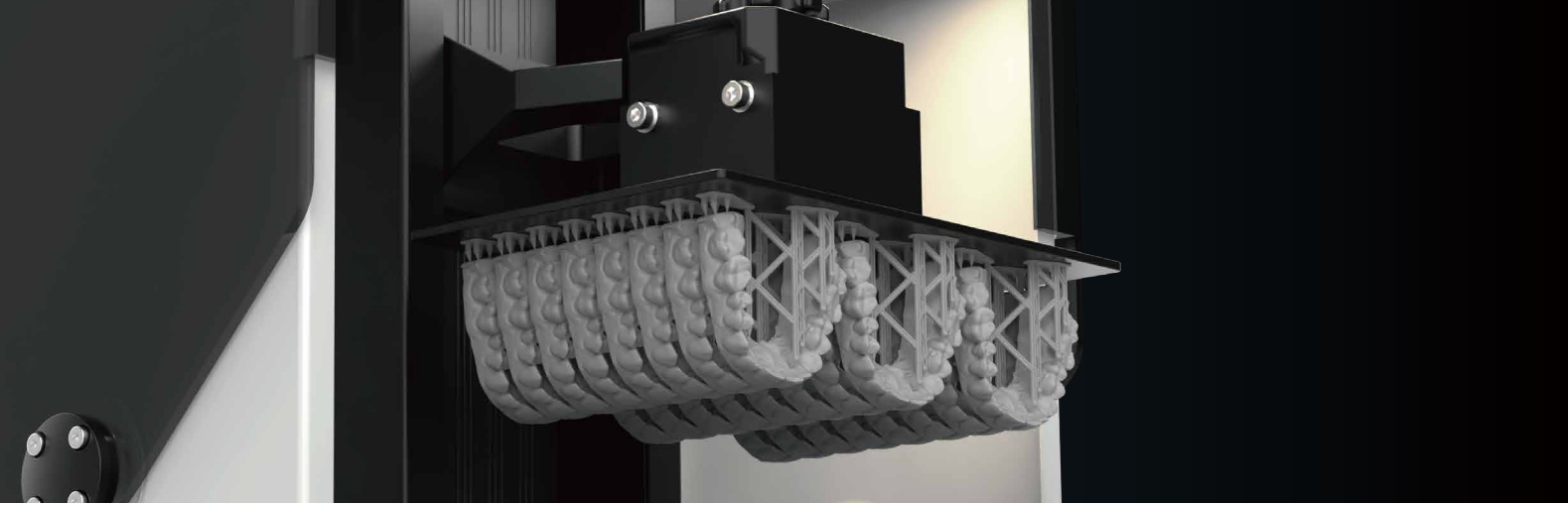
OPEN MATERIAL SYSTEM
100+ dental resin compatible



コアフロント株式会社
〒162-0845 東京都新宿区市谷本村町 2-11 外濠スカイビル 4F
TEL 03-5579-8710 FAX 03-5579-8711
E-MAIL desk@corefront.com www.corefront.com

製品の仕様は予告なく変更することがあります。予めご了承ください。記載内容は2023年9月現在のものです。 2023年9月版

医療機器届出番号: 13B1X10100000119



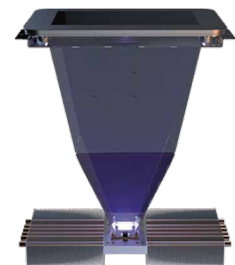
Key Features



Patented efficiency liquid-cooling system
Maintain printing temperature below 40°C



Patented low force stereo peeling technology
Micro-stereo composite peeling structures



Patented high power collimated light source
16 mW/cm² high power density, 95% uniformity

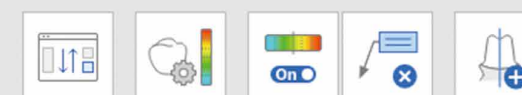
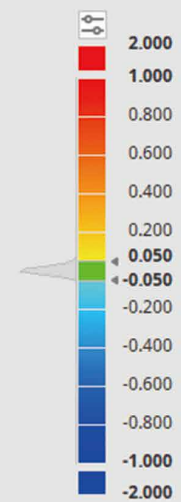


Resin temperature control system
Maintain optimal reaction temperature

State-of-art Accuracy

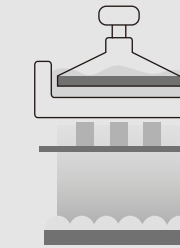
3D scans of full-arch models printed on NBEE show over 99.91% conformity within 100 microns and 95.87% conformity within 50 microns.

- Reference
- dental model mit go3dent-l's Case
- Target
- LG38-go3d-0.05-0.4s-1004-00-l's ...



Surface Smoothness

Best-in-class smoothness achieved with advanced anti-aliasing and blurring algorithm.



LCD



Up to Ra 6.3

